



## HYBRID POWER SYSTEM FOR PSO TUNED LOAD FREQUENCY CONTROL

G. Neelakrishnan\*<sup>1</sup>, M. Kannan<sup>2</sup> and D. Vinoth<sup>3</sup>

<sup>1,2,3</sup>Department of Electrical and Electronics Engineering.

<sup>1,2,3</sup>Muthayammal College of Engineering, Rasipuram.

Article Received on 24/09/2018

Article Revised on 14/10/2018

Article Accepted on 04/11/2018

### \*Corresponding Author

G. Neelakrishnan

Department of Electrical  
and Electronics  
Engineering.

### ABSTRACT

This paper deals with the Particle Swarm Optimisation (PSO) tuned Load Frequency Control (LFC) of single area power system, with diversified power sources. The diversified generating units considered for the purpose of LFC study are thermal, hydro and gas power plants.

Hybrid power system increases the reliability of the supply and instigates economic/feasible system operation. System frequency gets affected due to real power changes, this is regulated using Load Frequency Control (LFC). The hybrid interconnected power system with various generating units imposes additional complexity in the tuning of controllers. Thus in this paper PSO based tuning is imposed to obtain sophisticated control parameters for LFC of Hybrid power system.

**KEYWORDS:** Load Frequency Control, Hybrid power system, Particle Swarm Optimisation, Tuning of PI controller.

### INTRODUCTION

In the present circumstances power system operation and control has become more intricate due to increase in the inclusion of numerous new electric utilities to meet the increasing demand of electric power. In general, individual power stations cannot generate necessary real power during a faulted condition or when there is a substantial increase in the load. Whereas Hybrid Power Systems with various generation sources like thermal, hydro, gas etc., can meet different desired load scenarios, thereby ensuring consumer demands. Hybrid power

system restricts unnecessarily tripping of generators owing to large disturbances, thus enhancing system stability and reliability. Worldwide power grid has witnessed some critical blackouts. In most of these cases, inadequate load frequency control is found to be the major cause. Thereby, Load Frequency Control (LFC) plays a vital role in maintaining synchronism among diversified multi-source generations.<sup>[1]</sup> LFC helps in adequate control of real power output from generating units in hybrid power systems when there is a change or unanticipated occurrence of load perturbation.<sup>[2]</sup> LFC consists of two control loops, the primary loop performs pilot adjustment to frequency subsequent to the load disturbances and allows the participating GUs to share loads depending on their individual speed regulation constraints. The secondary loop is the ancillary control loop which does further adjustments in the system to maintain its preset nominal frequency.

Particle Swarm Optimisation (PSO) is an effective optimisation methodology that has been lucratively applied to numerous complex optimisation problems. It has the ability to avoid tendency towards local minima by employing an adaptive memory system.<sup>[3-6]</sup> PSO is based on swarm intelligence and when compared to other such approaches it has the advantage of uncomplicated implementation and there are few parameters to be preselected. Hence in this paper PSO algorithm is used to tune the PI controllers of the various generating units in the LFC of the Hybrid power system.

The remaining part of this paper is organized as follows: Section 2 describes the modelling of single area LFC of Hybrid power system comprising of thermal, hydro and gas generating units. In Section 3, the mathematical problem formulation for tuning the PI controllers and subsequently the solution methodology using PSO algorithm are presented. In Section 4, simulation results and analysis are presented. In Section 5, conclusions and further discussions are drawn from the analysis and reported.

## **Modelling Of Single Area Load Frequency Control of Hybrid Power System**

### ***A. Thermal generating station***

In Thermal generating station the steam turbine converts energy of high pressure and high temperature steam into kinetic energy which is, ultimately, converted into electrical energy by the turbo-alternator. The speed governing mechanism controls the steam input to the turbine thus eventually controlling the real power generation. In general, steam turbine consists of two or more series coupled turbine subsections through reheat chamber. The basic

transfer function model of reheat turbine,<sup>[7-8]</sup> relating changes in turbine output power ( $\Delta P_{mt}$ ) corresponding to change in gate valve position ( $\Delta X_t$ ), is given by (1).

$$\Delta P_{mt} = \frac{1}{1+sT_t} \frac{1+sK_rT_r}{1+sT_t} \Delta X_t(s) \quad (1)$$

where,  $K_r$  is the steam turbine reheat gain,  $T_r$  is the steam turbine reheat time constant (in s) and  $T_t$  is the steam turbine time constant (in s). It may be noted that  $\Delta X_t$  is the result of speed governor action which is given by (2).

$$\Delta X_t(s) = \frac{1}{1+sT_{sg}} \left( \Delta P_{tref}(s) - \left( \frac{\Delta F(s)}{R_t} \right) \right) \quad (2)$$

where  $R_t$  is the speed regulation parameter (in Hz/p.u. MW),  $T_{sg}$  is the speed governor time constant (in s),  $\Delta P_{tref}$  is the reference set power of thermal unit (in p.u. MW) and  $\Delta F$  is the deviation in nominal frequency (in Hz).

### ***B. Hydro Generating unit***

Hydro turbine based prime mover converts the kinetic energy of water flow into mechanical energy and, ultimately, it is converted into electrical energy using generator. Though speed governing mechanism for both thermal and hydro turbine is based on speed droop characteristics, Hydro turbine also requires transient droop compensation for stable speed control performance. Transfer function model,<sup>[9-10]</sup> describing how the hydraulic turbine power output ( $\Delta P_{mh}$ ) changes in response to a change in gate valve position ( $\Delta X_h$ ) is given by

$$\Delta P_{mh}(s) = \frac{1-sT_w}{1+0.5sT_w} \Delta X_h(s) \quad (3)$$

where  $T_w$  is the nominal starting time of water (in s). A linear approximation of the speed governor with transient droop in hydraulic turbine is given by (4)

$$\Delta X_h(s) = \frac{1}{1+sT_{gh}} \frac{1+sT_{rs}}{1+sT_{rh}} \left( \Delta P_{href} - \left( \frac{\Delta F(s)}{R_g} \right) \right) \quad (4)$$

Where  $R_g$  is the permanent speed droop (in Hz./p.u. MW),  $T_{gh}$ ,  $T_{rs}$  and  $T_{rh}$  are the hydro turbine speed governor main servo time constant (in s), reset time constant (in s) and transient droop time constant (in s) respectively.  $\Delta P_{href}$  is the reference set power for Hydro Generating Unit.

### C. Gas Turbine Generating unit

In general, Gas Turbine Generating Unit are multi-fuelled generating system consisting of speed governor, valve positioner, fuel system and combustor in conjunction with associated necessary control mechanism.

Transfer function model,<sup>[2]</sup> describing how the GT power output changes ( $\Delta P_{mg}$ ) in response to a change in gate valve position ( $\Delta X_g$ ) and  $\Delta F$  is given by (5)

$$\Delta P_{mg}(s) = \frac{1}{1+sT_2} \left( \Delta X_g(s) - D_{tur} \Delta F(s) \right) \quad (5)$$

Where  $T_2$  is the fuel time lag constant (in s) of the fuel system block and  $D_{tur}$  is the turbine damping (in p.u.). Expression for the fuel valve gate opening (with the maximum and the minimum opening limit being  $FOV_{max}$  and  $FOV_{min}$ , respectively) is the function of the minimum of the two signals coming out of low value gate (LVG) and is given by (6)

$$\Delta X_g(s) = \frac{1}{1+sT_1} \left[ \min \left\{ \left( \Delta P_{gref} - \left( \frac{\Delta F(s)}{R_g} \right) \right), \left( L_{max} + K_T \left( L_{max} - \left( \frac{\Delta P_{fsb}(s)}{1+sT_2} \right) \right) \right) \right\} \right] \quad (6)$$

where  $R_g$  is the speed regulation parameter (in Hz./p.u. MW),  $T_1$  is the fuel time lag constants (in s) of the fuel opening valve block,  $T_3$  is the load limiter time constant (in s) of the exhaust temperature block,  $\Delta P_{fsb}$  is the output (in p.u.) from fuel system block having time constant  $T_2$  (in s),  $K_T$  is temperature control loop gain and  $L_{max}$  is the load limit. In this model,  $\Delta P_{gref}$  is the reference set power for Gas Turbine Generating Unit.

### D. Modelling of single area hybrid power system

Transfer function model of the single-area hybrid power system for LFC study is developed by the combination of thermal, Hydro and Gas Turbine Generating Units as presented in Fig.1. In Fig.1.,  $K_t$ ,  $K_h$  and  $K_g$  represents participation factors from Thermal, Hydro and Gas Turbine Generating Unit, respectively.

Following a small change in load ( $\Delta P_L$ ) in p.u., the total change in net power generation  $\Delta P_G$  (p.u.) is given by (7), (8) and (9)

$$\Delta P_g(s) = \Delta P_{gt}(s) + \Delta P_{gh}(s) + \Delta P_{gg}(s) \quad (7)$$

$$\Delta P_g(s) = K_t \Delta P_{mt}(s) + K_h \Delta P_{mh}(s) + K_g \Delta P_{mg}(s) \quad (8)$$

where  $K_t + K_g + K_h = 1$

$$\Delta F(s) = \frac{K_{ps}}{(1+sT_{ps})} (\Delta P_g(s) - \Delta P_l(s)) \quad (9)$$

where  $K_{ps}$  is the power system gain and  $T_{ps}$  is the power system time constant (in s).

## Mathematical Problem Formulation for Tuning Pi Controller and Pso Based Solution Methodology

### Mathematical problem formulation for tuning PI controller

The objective function termed as Figure of Demerit (FOD) is formulated for optimal performance analysis of the single-area power system model. FOD for single-area with multi-source power system model shown in Fig. 1, is defined by, (10)

Objective function: Minimum FOD

$$FOD = \int_0^{t_{sim}} (\Delta f(t))^2 dt \quad (10)$$

Where,  $t_{sim}$  is the time duration of simulation (in s).

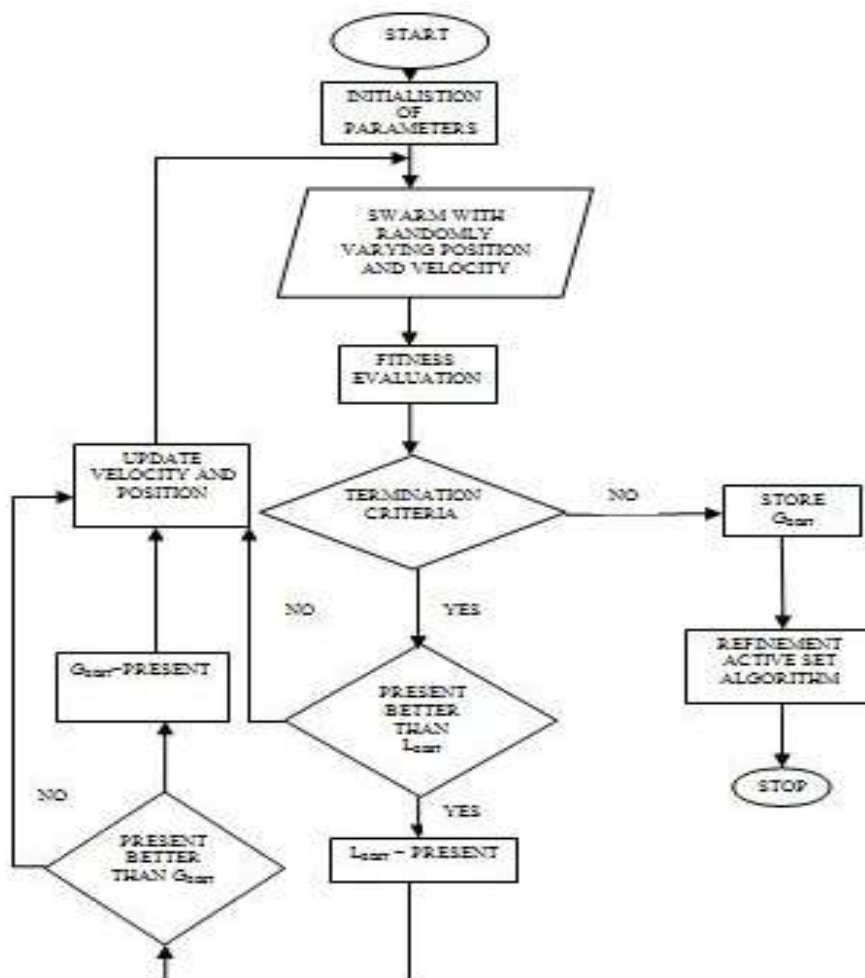
Subject to the constraints on control variables stated by (11) and (12)

$$K_{P_i}^{min} \leq K_P \leq K_{P_i}^{max} \quad ; i \in (TGU, HGU, GTGU) \quad (11)$$

$$K_{I_i}^{min} \leq K_I \leq K_{I_i}^{max} \quad (12)$$

### PSO based solution Methodology

The problem stated in the above section regarding the tuning of PI controller for LFC of hybrid power system is solved using PSO based methodology. The flowchart shown in Fig.2, represents the general solution methodology.



**Fig. 2: Flowchart for PSO algorithm.**

The sequential steps involved in the PSO based tuning of PI controller in LFC of hybrid power system are as follows

Step1. Random initialization of swarm consisting of initial position with control parameters namely  $K_P$  and  $K_I$  of thermal, hydro and gas units within their feasible limits.

Step2. Each particles frequency deviation  $\Delta f(t)$  is obtained using the transfer function model developed under section II. The control parameters of each position are the input for the controller in the Fig.1.

Step3. Evaluate the fitness of each particle using (10).

Step4. If the termination criterion is satisfied then store  $G_{BEST}$  and stop the optimisation process.

Step5. If criteria is not satisfied present value of  $L_{BEST}$  is better than the previous value then  $L_{BEST} = \text{present}$ .

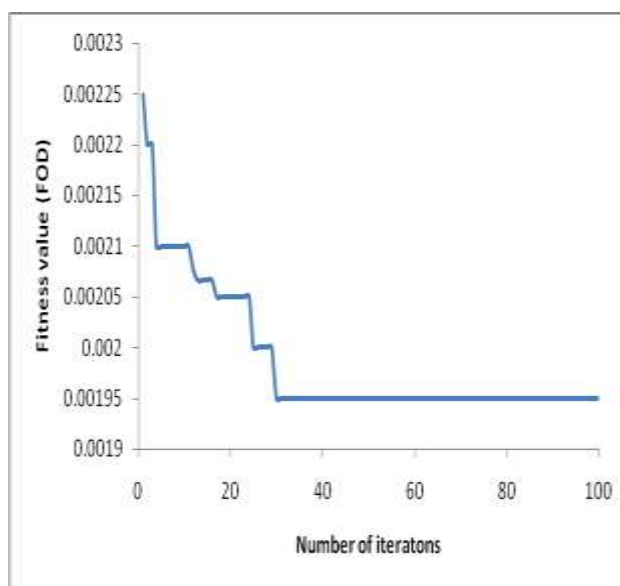
Step6. If the  $L_{BEST}$  present value is less than previous value then update position and velocity and proceed with Step 2.

Step7. After Step5 check  $G_{BEST}$ , if the present value better than previous value then  $G_{BEST} =$  present else update position and velocity and proceed with Step 2.

### SIMULATION RESULTS AND ANALYSIS

All The hybrid power system considered for the LFC

Analysis consist of thermal, hydro and gas generating units of rated capacity of 1000 MW, 600 MW and 400 MW respectively. The MVA based of the power system is considered as 100. All the parameter of the studied single-area power system configuration are included in appendix. The range of the control parameters is chosen as 0.01 to 10. The simulation time ( $t_{sim}$ ) is taken as 100s .The PSO parameters are as follows: Number of particles = 20; Max. iteration = 200: Acceleration factors = 1.1:Inertia weigh constant = 1.6. The simulation of the LFC model is done using MATLAB/SIMULINK and the code for the proposed PSO is realized using MATLAB software. The convergence characteristics of PSO algorithm for PI controller tuning of LFC is shown in Fig.3.



**Fig. 3: Convergence characteristics of PSO algorithm for PI controller tuning of LFC.**

From Fig. 3, it is inferred that the PSO algorithm converges without any abrupt oscillations thus the applicability of the proposed algorithm is ascertained. Under the action of PI controller with 0.1 p.u.MW increase in load, PSO optimized controller gains for each controller located at TGU, HGU and GTGU are presented in Table 1.

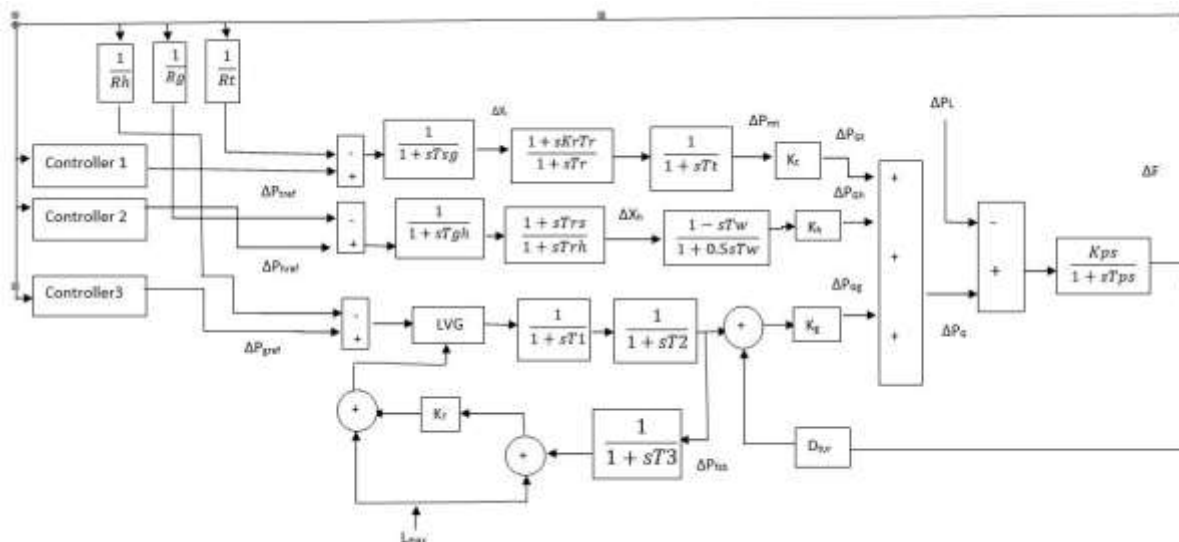


Fig. 4: Single area LFC model of Hybrid Power system.

Table I: PSO optimized controller gains of PI controller in LFC for hybrid power system

Generating unit	$K_P$	$K_I$	FOD
TGU	5.999	1.1918	0.00195
HGU	0.0010	1.4290	
GTGU	5.7516	1.9869	

The change in frequency profile for the PSO tuned (Table 1) LFC of hybrid power system is shown in Fig.4. From Fig. 4, it is inferred that due to PI controllers action the frequency deviation settles to zero under steady state. Moreover it can be observed that the maximum frequency deviation due to 0.1 p.u. MW increase in load is 0.59 Hz

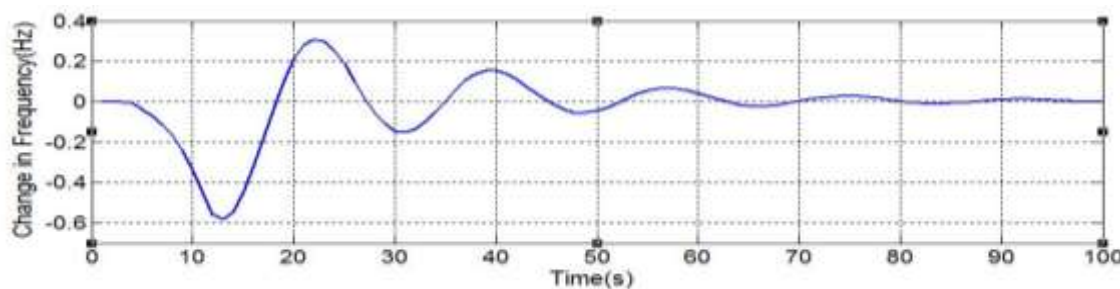
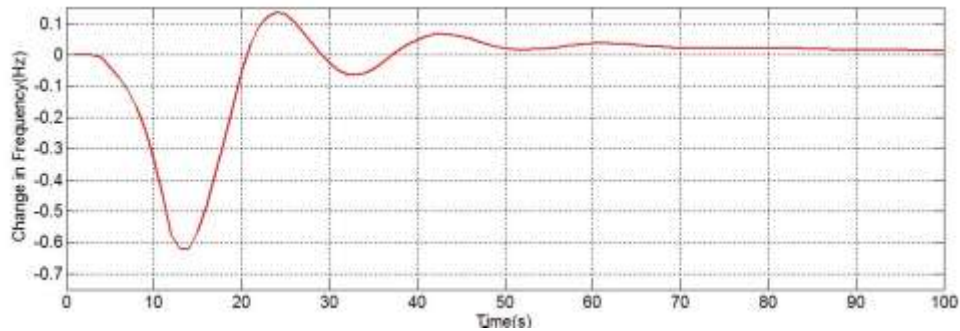


Fig. 5: Change in frequency profile for the PSO tuned LFC of hybrid power system (multi-source system).

The change in frequency profile for the PSO tuned LFC of Thermal power system (excluding hydro and gas units) is shown in Fig.5. From Fig. 5, it can be observed that the maximum frequency deviation due to 0.1 p.u. MW increase in load is 0.62 Hz.





**Fig 6: Change in frequency profile for the PSO tuned LFC of Thermal power system (single source system)**

On comparing Fig.4 and Fig.5. it is evident that the maximum frequency deviation is minimal for hybrid power system.

## CONCLUSIONS

In this paper, LFC of single-area hybrid power system incorporating thermal, hydro and gas generating units has been presented. The LFC is comparatively analysed for the hybrid system and isolated thermal system for an increase in load with PI controllers. The gain(s) of these PI controllers are tuned using PSO based methodology. Results obtained shows that performance of the PSO tuned PI controller is found to be suitable for stable power system operation. In addition the comparative analysis of hybrid and isolated power system reveals the superiority in the frequency control of hybrid power system.

## Appendix

Parameters of single-area power system model

$R_t = R_h = R_g = 2.4 \text{ Hz/p.u. MW}$ ,  $T_{sg} = 0.08 \text{ s}$ ,  $T_t = 0.3 \text{ s}$ ,  $T_r = 10 \text{ s}$ ,  $K_r = 0.3$ ;  $T_w = 1 \text{ s}$ ,  $T_{rs} = 5 \text{ s}$ ,  $T_{rh} = 28.75 \text{ s}$ ,  $T_{gh} = 0.2 \text{ s}$ ,  $T_1 = 1.5 \text{ s}$ ,  $T_2 = 1.5 \text{ s}$ ,  $T_3 = 3 \text{ s}$ ,  $L_{max} = 1$ ,  $K_T = 1$ ,  $FOV_{min} = 0.02$ ,  $FOV_{max} = 1$ ,  $D_{tur} = 0$ ,  $K_{ps} = 68.9566$ ,  $T_{ps} = 11.49 \text{ s}$ ,  $K_t = 0.543478$ ,  $K_h = 0.326084$ ,  $K_g = 0.130438$ .

## REFERENCES

1. P Kundur. "Power system stability and control," 8th ed, New Delhi, TataMc-Graw Hill, 2009.
2. G. Shankar, V. Mukeerjee on "Quasi oppositional harmony search algorithm based controller tuning for load frequency control of multi-source, multi-area power system". Electrical Power and Energy System Research Syst, 2014; 75: 289-302.

3. Yong Zhang, Dun-wei Gong, and Jian Cheng on “Multi-Objective Particle Swarm Optimization Approach for Cost-Based Feature Selection in Classification,” *IEEE Transl. J. Magn*, 2017; 14(1): 64-75.
4. Peng Hou, Weihao Hu, Mohsen Soltani, Zhe Chen. “Optimized Placement of wind turbines in large-scale offshore Wind Farm Using Particle Swarm Optimization Algorithm” *IEEE transactions on sustainable energy*, 2015; 6(4): 1272-1282.
5. SHU Dasong, HUANG Zhixiong, LI Junye and ZOU Xiaoyang, “Application of Multi-agent Particle Swarm Algorithm in Distribution Network Reconfiguration”, *Chinese Journal of Electronics*, 2016; 25(6) 1179-1185.
6. Chakkarapani Manickam , Guru Raghav Raman, Guru Praneesh Raman ,Saravana Ilango Ganesan and Chilakapati Nagamani, “ A Hybrid Algorithm for tracking og GMPP Based on P and O and PSO with Reduced Power Oscillation in String Inverters”, *IEEE Transactions on Industrial Informatics*, 2016; 63(10): 6097-6106.
7. Asadur Rahman, Lalit Chandra Saikia,Nidul Sinha. “Load Frequency Control of Hydro-thermal system under deregulated environment using biogeography based optimised three-degree-of-freedom integral derivative controller”, *The Institution of Engineering and Technology*, 9(15): 2284-2293.
8. Vijay P.Singh,Nand Kishor and Paulson Samuel, “Load Frequency Control with Communication Topology changes in Smart Grid,”*IEEE Transactions on Industrial Informatics*, October 2016; 12(5): 1943-1952.
9. Mohit Kumar Pandey, Mahesh Kumar Meena, Omveer Singh, Prashantjeet Tyagi. “Load Frequency Control of Hydro and Nuclear Power System by PI and GA controller”, *International Journal of Scientific and Research Engineering and Technology*, 2013; 2(6): 326-331.
10. Xiangjie Liu , Xiaobing Kong ,Kwang Y.Lee, “Distributed model predictive control for load frequency control with dynamic fuzzy valve position modelling for hydro-thermal power system”, *The Institution of Engineering and Technology*, 10(14): 1653-1664.
11. C.Nagarajan and M.Madheswaran - ‘Experimental verification and stability state space analysis of CLL-T Series Parallel Resonant Converter’ - *Journal of ELECTRICAL ENGINEERING*, Dec.2012; 63(6): 365-372.
12. C.Nagarajan and M.Madheswaran – ‘Analysis and Implementation of LLC-T Series Parallel Resonant Converter with Fuzzy controller’- *International Journal of Engineering Science and Technology (IJEST)*, *Applied Power Electronics and Intelligent Motion Control*, December 2010; 2(10): 35-43.

13. C.Nagarajan and M.Madheswaran - 'Performance Analysis of LCL-T Resonant Converter with Fuzzy/PID Using State Space Analysis'- Springer, Electrical Engineering, September 2011; 93(3): 167-178.
14. C.Nagarajan and M.Madheswaran - 'Stability Analysis of Series Parallel Resonant Converter with Fuzzy Logic Controller Using State Space Techniques'- Taylor & Francis, Electric Power Components and Systems, May 2011; 39(8): 780-793.
15. C.Nagarajan and M.Madheswaran - 'DSP Based Fuzzy Controller for Series Parallel Resonant converter'- Springer, Frontiers of Electrical and Electronic Engineering, 7(4): 438-446.
16. C.Nagarajan and M.Madheswaran - 'Experimental Study and steady state stability analysis of CLL-T Series Parallel Resonant Converter with Fuzzy controller using State Space Analysis'- Iranian Journal of Electrical & Electronic Engineering, September 2012; 8(3): 259-267.
17. C.Nagarajan and M.Madheswaran, "Analysis and Simulation of LCL Series Resonant Full Bridge Converter Using PWM Technique with Load Independent Operation" has been presented in ICTES'08, a IEEE / IET International Conference organized by M.G.R.University, Chennai, Dec.2007; 1: 190-195.
18. R.Raja and C.Nagarajan, 2018, "Performance Analysis of LCL-T Filter Based 2 Stage Single Phase Grid Connected Module with ANN Controller using PV Pane," Current Signal Transduction Therapy, 2018; 13(2): 159-167.
19. C. Nagarajan, M.Madheswaran and D.Ramasubramanian- 'Development of DSP based Robust Control Method for General Resonant Converter Topologies using Transfer Function Model'- Acta Electrotechnica et Informatica Journal, 2013; 13(2): 18-31.
20. R.Srinivasan et.al "Analysis and design of series inverter based load reactive power compensation" in the International Journal of Innovative Research in Science, Engineering and Technology (IJIRSET), 2015; 4(6).
21. R.Srinivasan et.al "Load Reactive Power Compensation using series inverter" in the International Journal of Applied Engineering Research (IJAER), ISSN 0973-4562, 2015; 10(9).
22. R.Srinivasan et.al "Unbalanced Load Correction using Active Filter" in the International Journal of Applied Engineering Research (IJAER), ISSN 0973-4562, 2015; 10(9).
23. R.Srinivasan et.al "Design and Analysis of Active Filter based Unbalanced Load Correction" in the International Journal of Innovative Research in Science, Engineering and Technology (IJIRSET), 2015; 4(6).

24. R.Srinivasan et.al “A Cascaded Multilevel H- Bridge Inverter for Electric Vehicles with Low Harmonic Distortion” in the International Journal of Scientific Engineering and Technology (IJSET) ISSN: 2349-6495, 2014; 1(6).
25. R.Srinivasan, M.Kannan and G.Neelakrishnan “AC/DC SEPIC Converter for Non-Linear Controller” in the IJAREEIE, Nov 2014; 3(11).
26. R.Srinivasan et.al “Analysis of Low Power Dual Dynamic Node Hybrid Flip-Flop” in the International Journal of Advanced Engineering Research and Science (IJAERS), 2014; 1(6).
27. R.Srinivasan et.al “A Hybrid Text Classification Approach Using Knn and Svm” in the International Journal of Advances Foundation and Research in Computer (IJAFRC), ISSN: 2349-6495, 2014; 1(3).
28. R.Srinivasan and D.Vinoth “Protection of Wireless Sensor Network from Gang Injecting False Data Attack” has been published in International Journal of Advanced Research in Electrical, Electronics and Instrumentation Engineering (IJAREEIE), February 2014; 3(2): 7301-7311.
29. R.Srinivasan et.al “Probabilistic Based Rock Texture Classification” has been published in International Journal of Advances in Engineering & Technology (IJAET), 2014; 6(6): 2439-2447.
30. R.Srinivasan, R.Vinoth and D.Kalidass “Remote Admittance & Demonstrate For Client Control Mobile Computing” has been published in International Journal of Scientific Engineering and Technology (IJSET), 2014; 3(1): 13-16.
31. R.Srinivasan, et.al “Characterization of Color and Texture Features from Retrieved Images using CBIR” has been published in International Journal of Research in Advent Technology (IJRAT), Dec 2013; 1(5): 61-67.
32. R.Srinivasan et.al “FPGA Implementation of Efficient Modified VLSI Architecture for Multiplier” has been published in International Journals of latest research in Engineering and Computing (IJLREC), Nov-Dec 2013; 1(2): 7-10.
33. R.Srinivasan et.al “Stability Analysis of ARM Based Control of Brushless DC Motors Using Digital PWM Technique” has been published in International Journal of Advanced Research in Electronics and Communication Engineering (IJARECE), Nov 2013; 2(11): 880-884.